

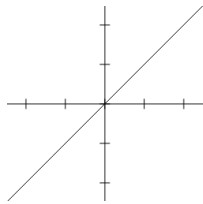
REPRESENTACIÓN FUNCIONES ELEMENTALES

• **COMPOSICIÓN DE FUNCIONES**

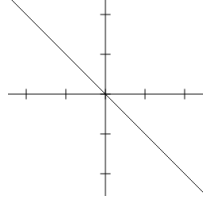
- $f(x) + k \rightarrow$ la función $f(x)$ desplazada k unidades hacia arriba
- $f(x) - k \rightarrow$ la función $f(x)$ desplazada k unidades hacia abajo
- $f(x + k) \rightarrow$ la función $f(x)$ desplazada k unidades hacia la izquierda
- $f(x - k) \rightarrow$ la función $f(x)$ desplazada k unidades hacia la derecha
- $f(-x) \rightarrow$ la función $f(x)$ simétrica respecto el eje OY (simetría par)

• **RECTAS $y = mx + n$**

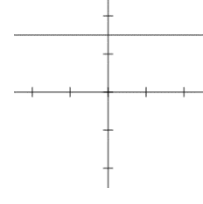
$m > 0$



$m < 0$



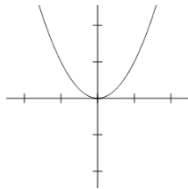
$m = 0$



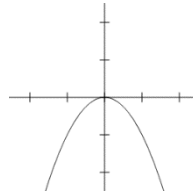
• **CUADRATICAS $y = ax^2 + bx + c$**

Vértice: $v_x = -\frac{b}{2a} \rightarrow$ calculamos v_y

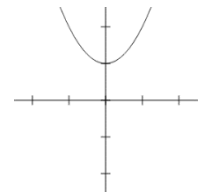
$y = x^2$



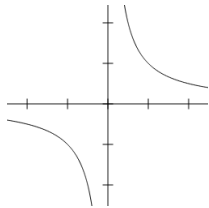
$y = -x^2$



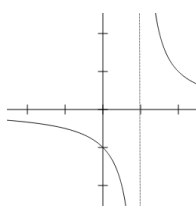
$y = x^2 + 1$



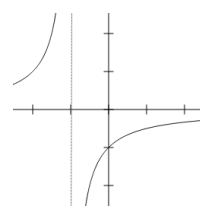
• **RACIONALES O DE PROPORCIONALIDAD INVERSA $y = a/x$**



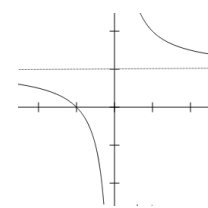
$y = \frac{1}{x}$



$y = \frac{1}{x-1}$

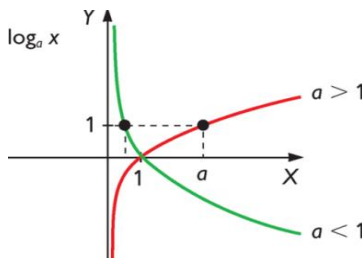


$y = \frac{1}{x+1}$

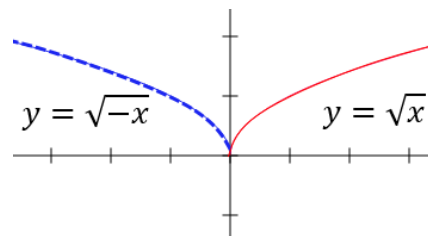


$y = \frac{1}{x} + 1$

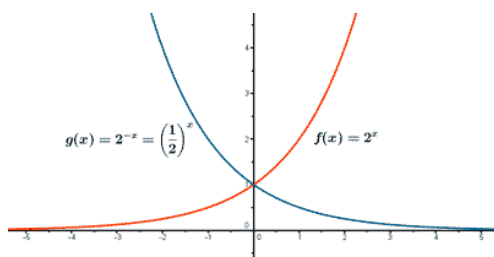
• **LOGARIMITCAS**



• **RAIZ CUADRADA**



• **FUNCION EXPONENCIAL**



Para "trastear" en casa con las funciones:

<http://fooplot.com>

<https://calcme.com>

<https://www.desmos.com/calculator>

<https://www.geogebra.org/>

Desmos y Geogebra tienen app para móviles